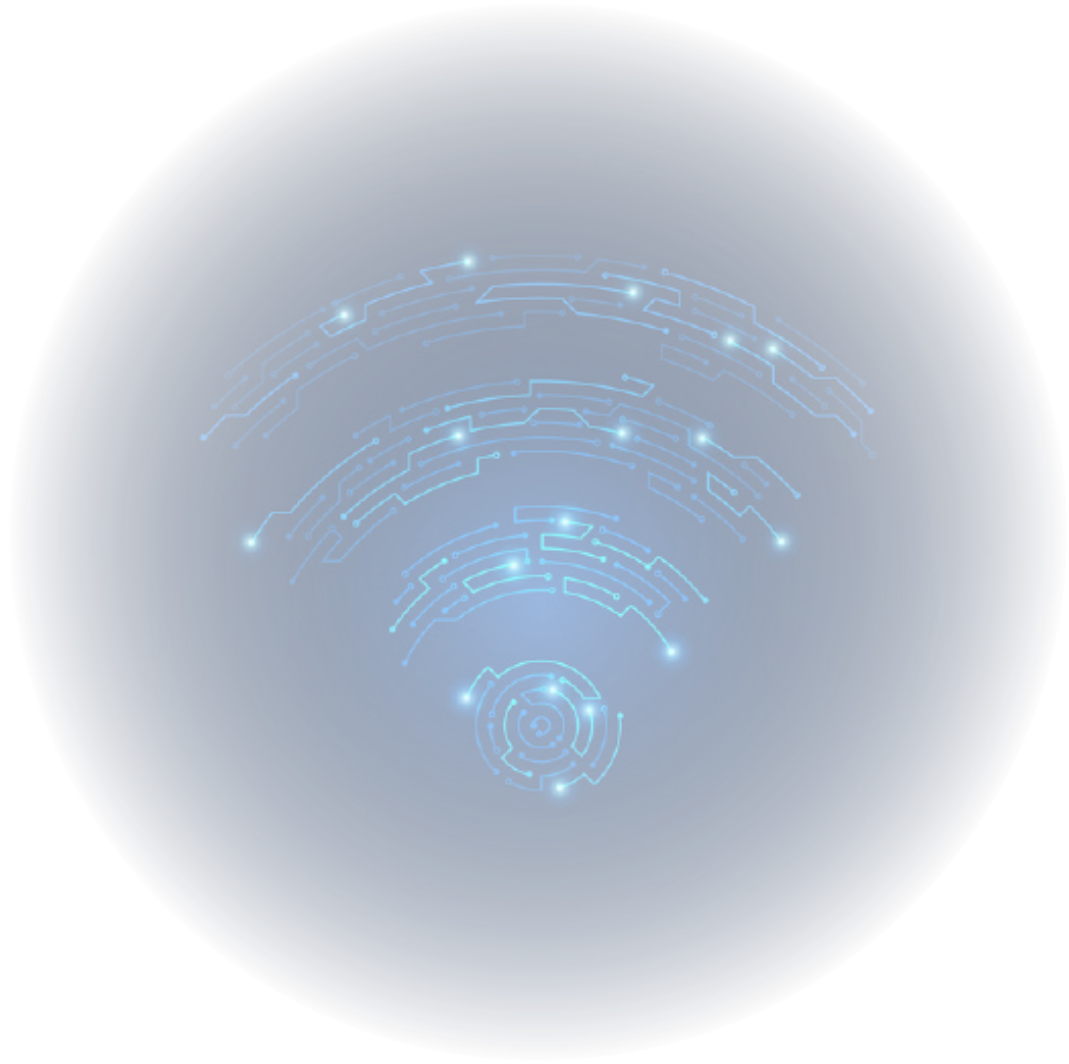


KVY-1P4G-DPL-B

OMNI DIRECTIONAL ANTENNA





VERSİYON: 1.1


TARİH: 30.07.2022

KUVAYI TECHNOLOGIES A.Ş

ÖZELLİKLER

ELEKTRİKSEL 	
Model	KVY-1P4G-DPL-B
Frekans	1400 MHz
Patern Tipi	Çok Yönlü (Omni)
Polarizasyon	Dikey
Empedans	50 Ω
Kazanç	2 dBi
VSWR	< 1.5:1
Band Genisligi	1350-1450 MHz
Maksimum Giriş Gücü	50W

MEKANİK 	
Konnektör Tipi	SMA Plug (male) (0°,45°,90°)
Anten Rengi	Siyah
Uzunluk	200 mm
Çap	15 mm
Ağırlık	25 gr

ÇEVRE KOŞUL 	
Operasyonel Çalışma Sıcaklığı	-30° to +60°C
Depolama Sıcaklığı	-30° to +75°C
IP Koruma Sınıfı	



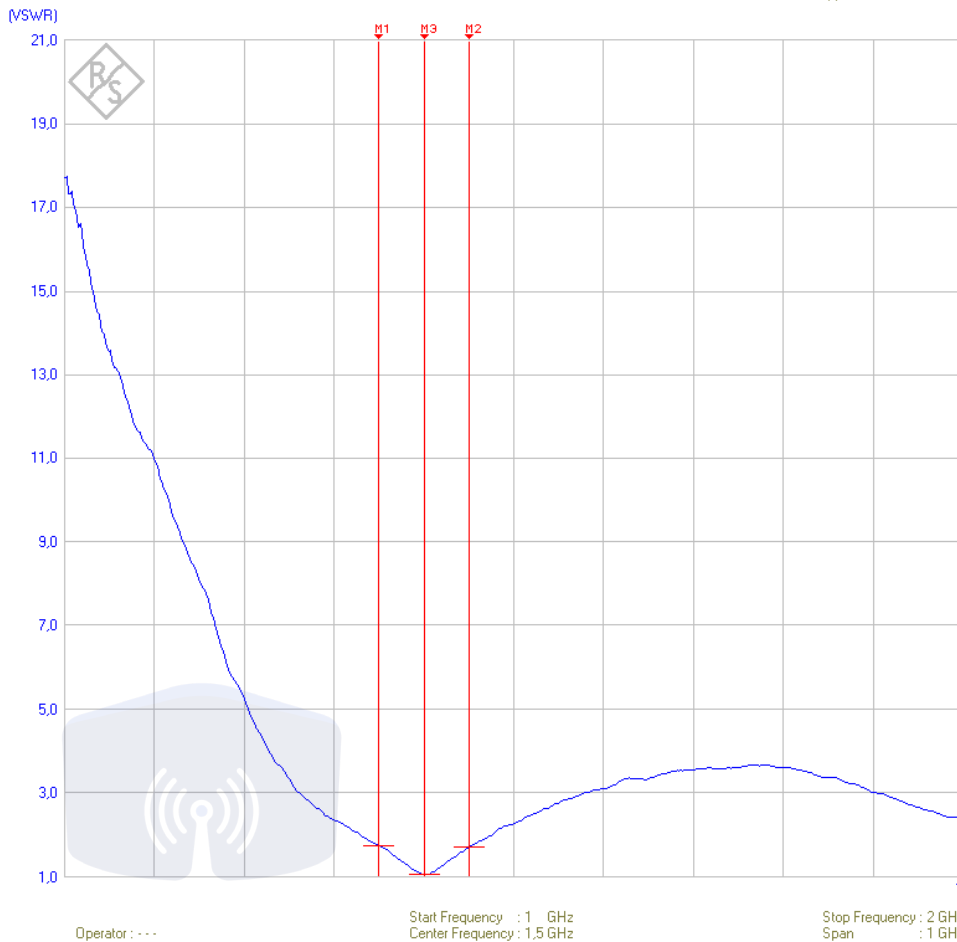
VSWR

Ref[P2] Vector
 Ref Level : 0,0 dB
● RF Attenuator : 10 dB

RBW : 10 kHz

VSWR
 SWT : 125 ms
 TG Attenuation : 10,0 dB

Trace Mode : Clear / Write
 Suppression : Off

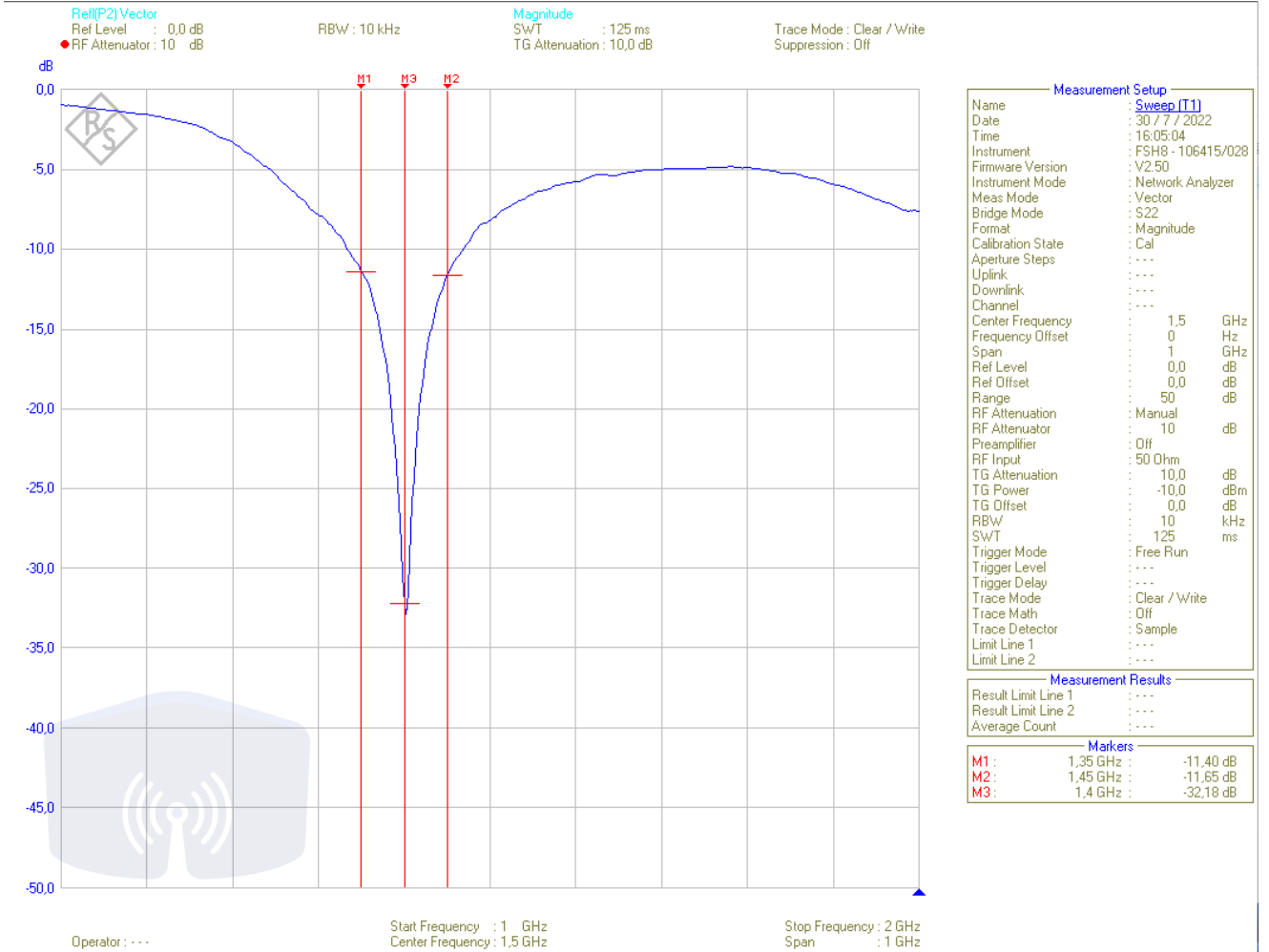


Measurement Setup	
Name	Sweep [T1]
Date	30 / 7 / 2022
Time	16:05:04
Instrument	FSH8 - 106415/028
Firmware Version	V2.50
Instrument Mode	Network Analyzer
Meas Mode	Vector
Bridge Mode	S22
Format	VSWR
Calibration State	Cal
Aperture Steps	...
Uplink	...
Downlink	...
Channel	...
Center Frequency	1,5 GHz
Frequency Offset	0 Hz
Span	1 GHz
Ref Level	0,0 dB
Ref Offset	0,0 dB
Range	21
RF Attenuation	Manual
RF Attenuator	10 dB
Preamplifier	Off
RF Input	50 Ohm
TG Attenuation	10,0 dB
TG Power	-10,0 dBm
TG Offset	0,0 dB
RBW	10 kHz
SWT	125 ms
Trigger Mode	Free Run
Trigger Level	...
Trigger Delay	...
Trace Mode	Clear / Write
Trace Math	Off
Trace Detector	Sample
Limit Line 1	...
Limit Line 2	...

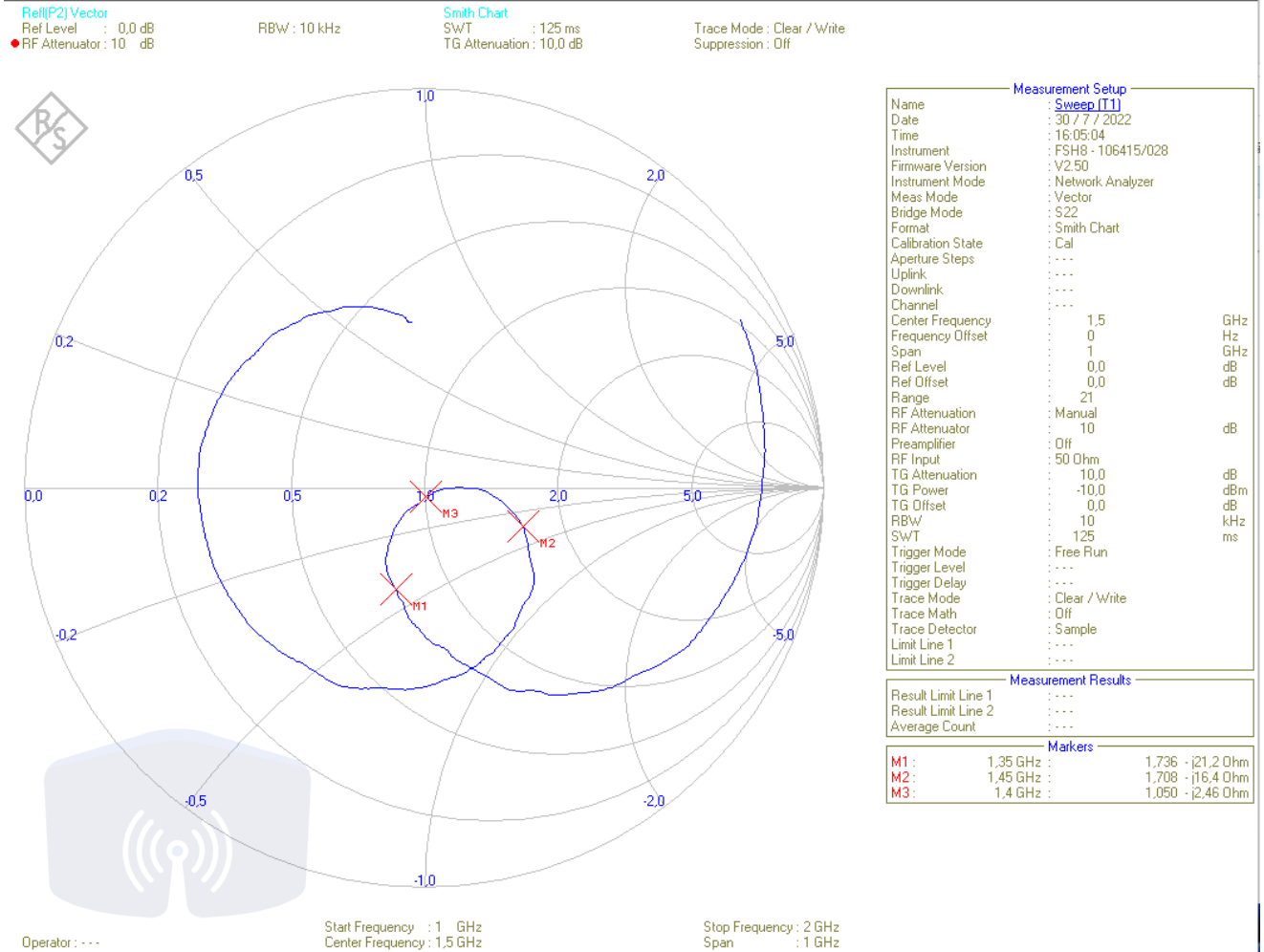
Measurement Results	
Result Limit Line 1	...
Result Limit Line 2	...
Average Count	...

Markers		
M1:	1,35 GHz	1,736
M2:	1,45 GHz	1,708
M3:	1,4 GHz	1,050

GERİ DÖNÜŞ KAYBI



GİRİŞ EMPEDANSI





Siparis Ayrıntıları

Siparis Linki:

<http://www.kuvayitechnologies.com/>

Çağış Mah. Çağış B.M SK. NO: 340 /16-
İç Kapı No: 60-BİGADIÇ/ BALIKESİR

Satis: +90 505 116 27 05

e-mail: info@kuvayitechnologies.com

Web: <http://www.kuvayitechnologies.com/>