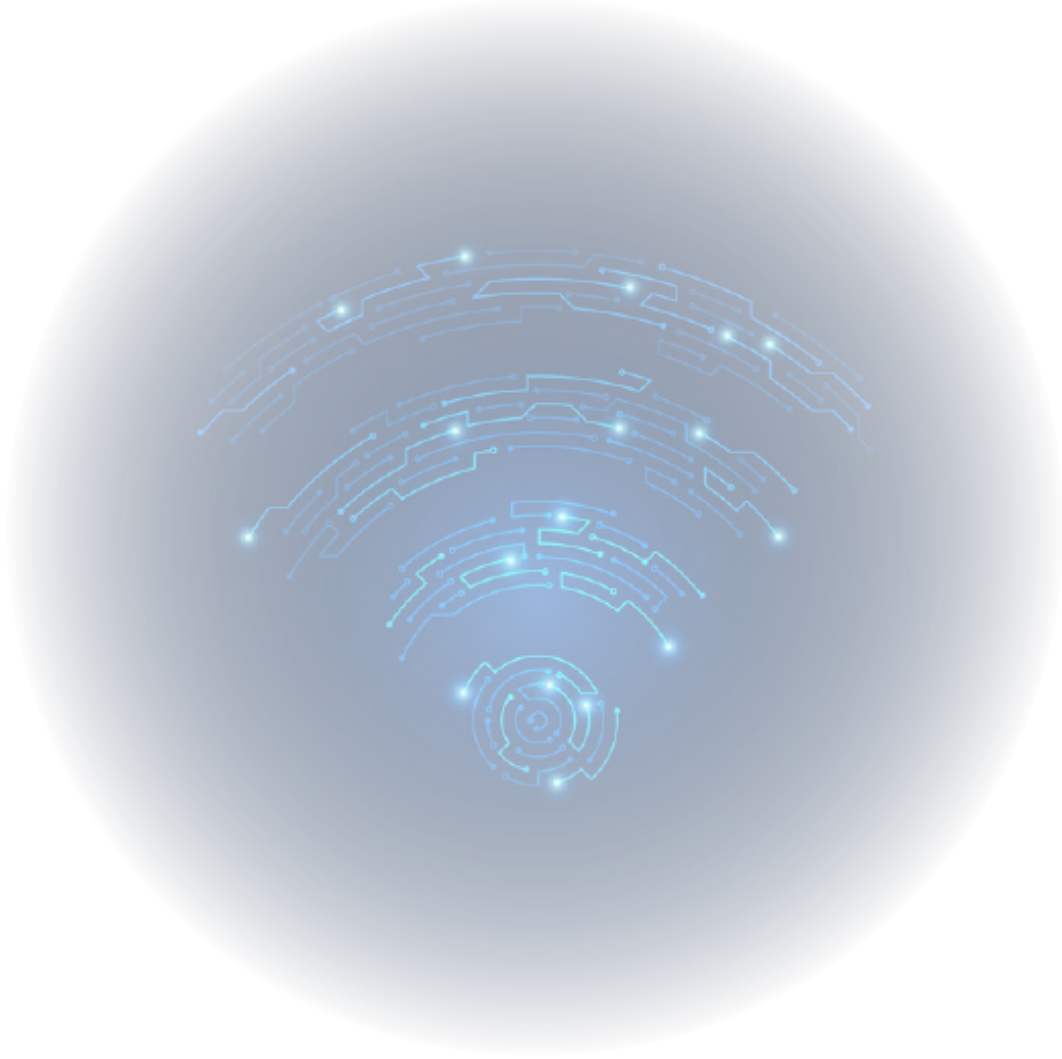


KVY-860M-DPL-B

ÇOK YÖNLÜ ANTEN (OMNI)




VERSİYON: 1.1


TARİH: 09.08.2022

KUVAYI TECHNOLOGIES A.Ş

## ÖZELLİKLER

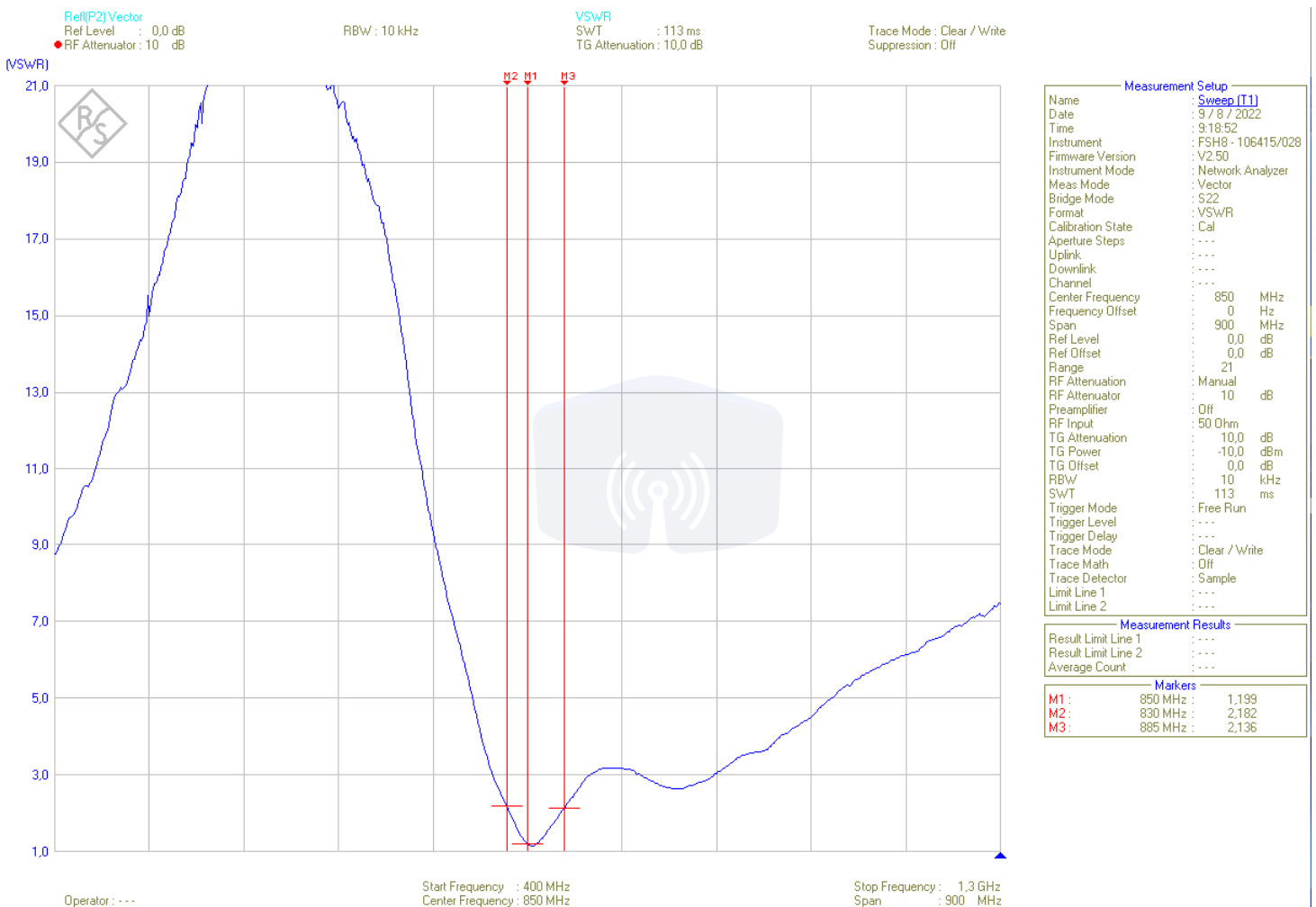
ELEKTRİKSEL 	
Model	KVY-860M-DPL-B
Frekans	860 MHz
Patern Tipi	Çok Yönlü (Omni)
Polarizasyon	Dikey
Empedans	50 $\Omega$
Kazanç	2 dBi
VSWR	< 1.5:1
Band Genisligi	830-885 MHz
Maksimum Giriş Gücü	50W

MEKANİK 	
Konnektör Tipi	SMA Plug (male) (0°,45°,90°)
Anten Rengi	Siyah
Uzunluk	200 mm
Çap	15 mm
Ağırlık	20 gr

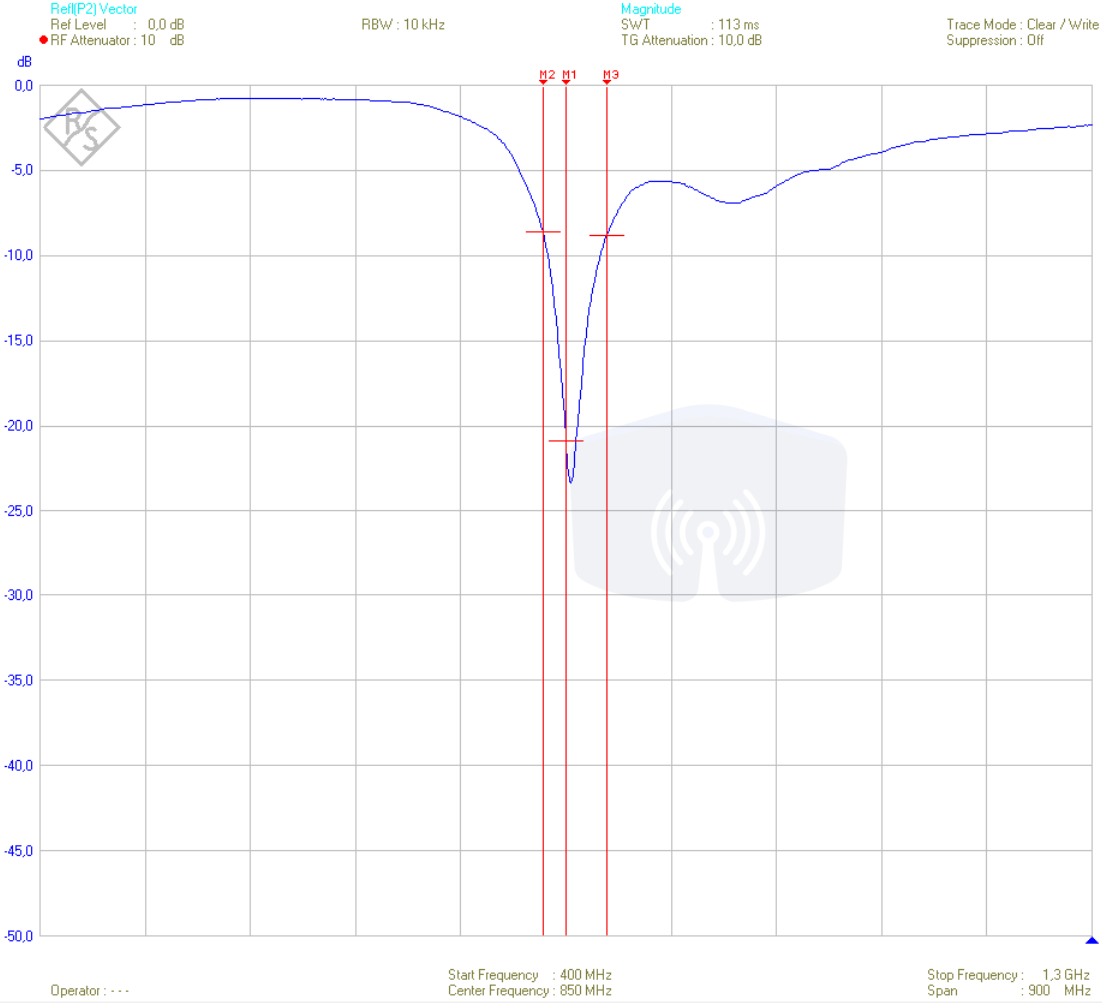
ÇEVRE KOŞUL 	
Operasyonel Çalışma Sıcaklığı	-30° to +60°C
Depolama Sıcaklığı	-30° to +75°C
IP Koruma Sınıfı	



# VSWR



# GERİ DÖNÜŞ KAYBI



Measurement Setup	
Name	: Sweep [T1]
Date	: 9 / 8 / 2022
Time	: 9:18:52
Instrument	: FSH8 - 106415/028
Firmware Version	: V2.50
Instrument Mode	: Network Analyzer
Meas Mode	: Vector
Bridge Mode	: S22
Format	: Magnitude
Calibration State	: Cal
Aperture Steps	: ...
Uplink	: ...
Downlink	: ...
Channel	: ...
Center Frequency	: 850 MHz
Frequency Offset	: 0 Hz
Span	: 900 MHz
Ref Level	: 0,0 dB
Ref Offset	: 0,0 dB
Range	: 50 dB
RF Attenuation	: Manual
RF Attenuator	: 10 dB
Preamplifier	: Off
RF Input	: 50 Ohm
TG Attenuation	: 10,0 dB
TG Power	: -10,0 dBm
TG Offset	: 0,0 dB
RBW	: 10 kHz
SWT	: 113 ms
Trigger Mode	: Free Run
Trigger Level	: ...
Trigger Delay	: ...
Trace Mode	: Clear / Write
Trace Math	: Off
Trace Detector	: Sample
Limit Line 1	: ...
Limit Line 2	: ...

Measurement Results	
Result Limit Line 1	: ...
Result Limit Line 2	: ...
Average Count	: ...

Markers		
M1	: 850 MHz	: -20,87 dB
M2	: 830 MHz	: -8,60 dB
M3	: 885 MHz	: -8,82 dB

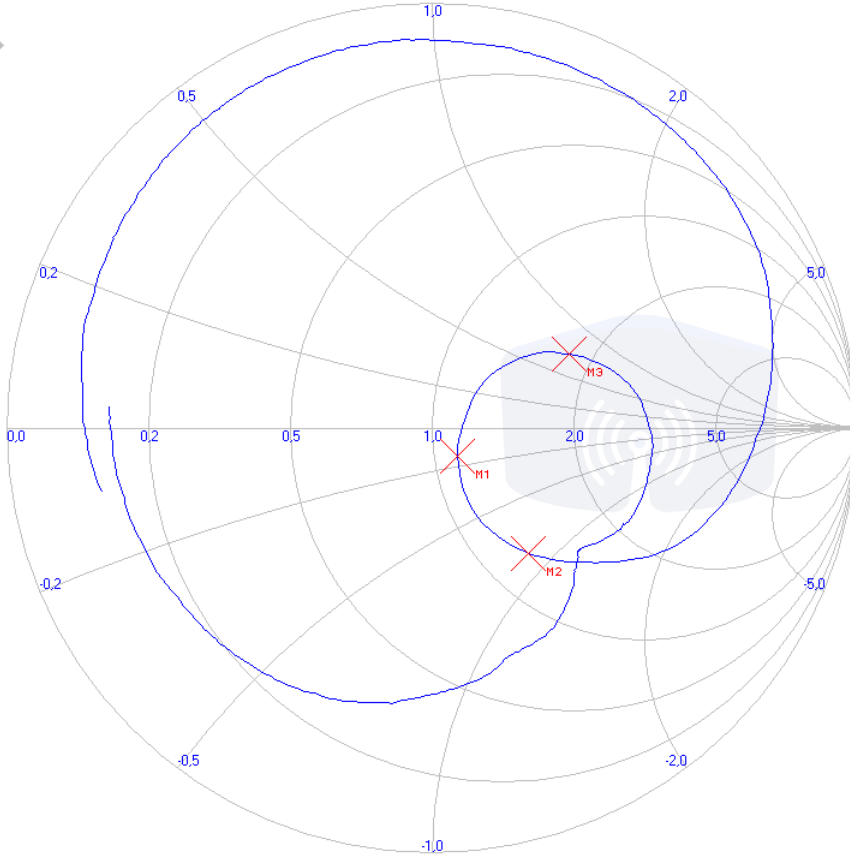
# GİRİŞ EMPEDANSI

Ref[P2] Vector  
Ref Level : 0.0 dB  
RF Attenuator : 10 dB

RBW : 10 kHz

Smith Chart  
SWT : 113 ms  
TG Attenuation : 10.0 dB

Trace Mode : Clear / Write  
Suppression : Off



Operator : ...

Start Frequency : 400 MHz  
Center Frequency : 850 MHz

Stop Frequency : 1,3 GHz  
Span : 900 MHz

## Measurement Setup

Name	Sweep [1]
Date	9 / 8 / 2022
Time	9:18:52
Instrument	FSH8 - 106415/028
Firmware Version	V2.50
Instrument Mode	Network Analyzer
Meas Mode	Vector
Bridge Mode	S22
Format	Smith Chart
Calibration State	Cal
Aperture Steps	...
Uplink	...
Downlink	...
Channel	...
Center Frequency	850 MHz
Frequency Offset	0 Hz
Span	900 MHz
Ref Level	0.0 dB
Ref Offset	0.0 dB
Range	21
RF Attenuation	Manual
RF Attenuator	10 dB
Preamplifier	Off
RF Input	50 Ohm
TG Attenuation	10.0 dB
TG Power	-10.0 dBm
TG Offset	0.0 dB
RBW	10 kHz
SWT	113 ms
Trigger Mode	Free Run
Trigger Level	...
Trigger Delay	...
Trace Mode	Clear / Write
Trace Math	Off
Trace Detector	Sample
Limit Line 1	...
Limit Line 2	...

## Measurement Results

Result Limit Line 1	...
Result Limit Line 2	...
Average Count	...

## Makers

M1 :	850 MHz :	1,199 -j7,65 Ohm
M2 :	830 MHz :	2,182 -j43,0 Ohm
M3 :	885 MHz :	2,136 +j35,2 Ohm

## Siparis Ayrıntıları

Siparis Linki:

<http://www.kuvayitechnologies.com/>

Çağış Mah. Çağış B.M SK. NO: 340 /16-  
İç Kapı No: 60-BİGADIÇ/ BALIKESİR

Satış: +90 505 116 27 05

e-mail: [info@kuvayitechnologies.com](mailto:info@kuvayitechnologies.com)

Web: <http://www.kuvayitechnologies.com/>