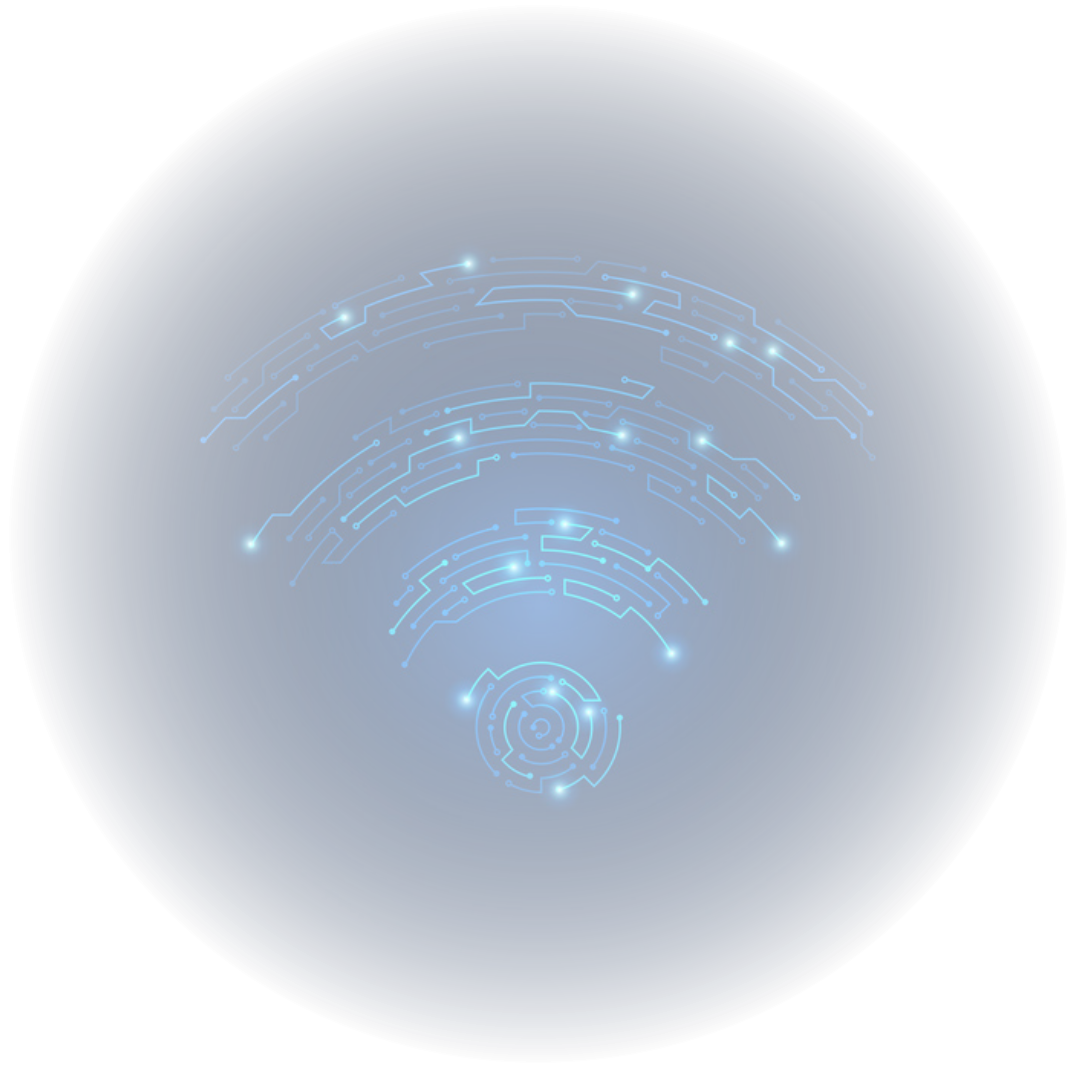


KVY-490-ESHB

OMNIDIRECTIONAL



kuvayi
technologies





VERSION: 1.1


DATE: 15.08.2022

KUVAYI TECHNOLOGIES CO.

PROPERTIES

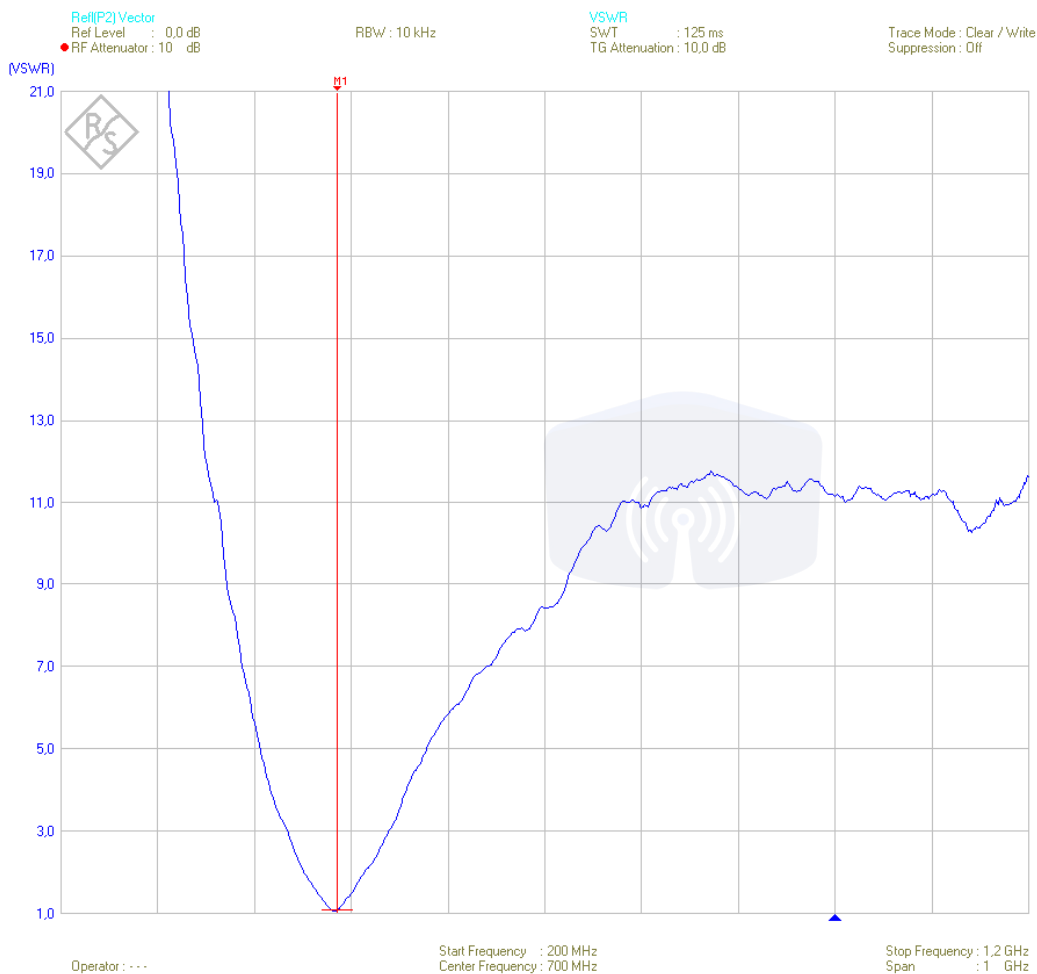
ELECTRICAL 	
Model	KVY-490-ESHB
Frequency	485 MHz
Pattern Type	Omni Directional
Polarization	Vertical
Impedance	50 Ω
Gain	2 dBi
VSWR	< 1.5:1
Bandwidth	465-500MHz
Maximum Input Power	50W

MECHANIC 	
Connector Type	IPEX
Antenna Colour	Black
Length	142 mm
Diameter	10 mm
Weight	11 gr

ENVIRONMENT CONDITION 	
Operational Working Temperature	-30° to +60°C
Storage Temperature	-30° to +75°C
IP Protection Class	-

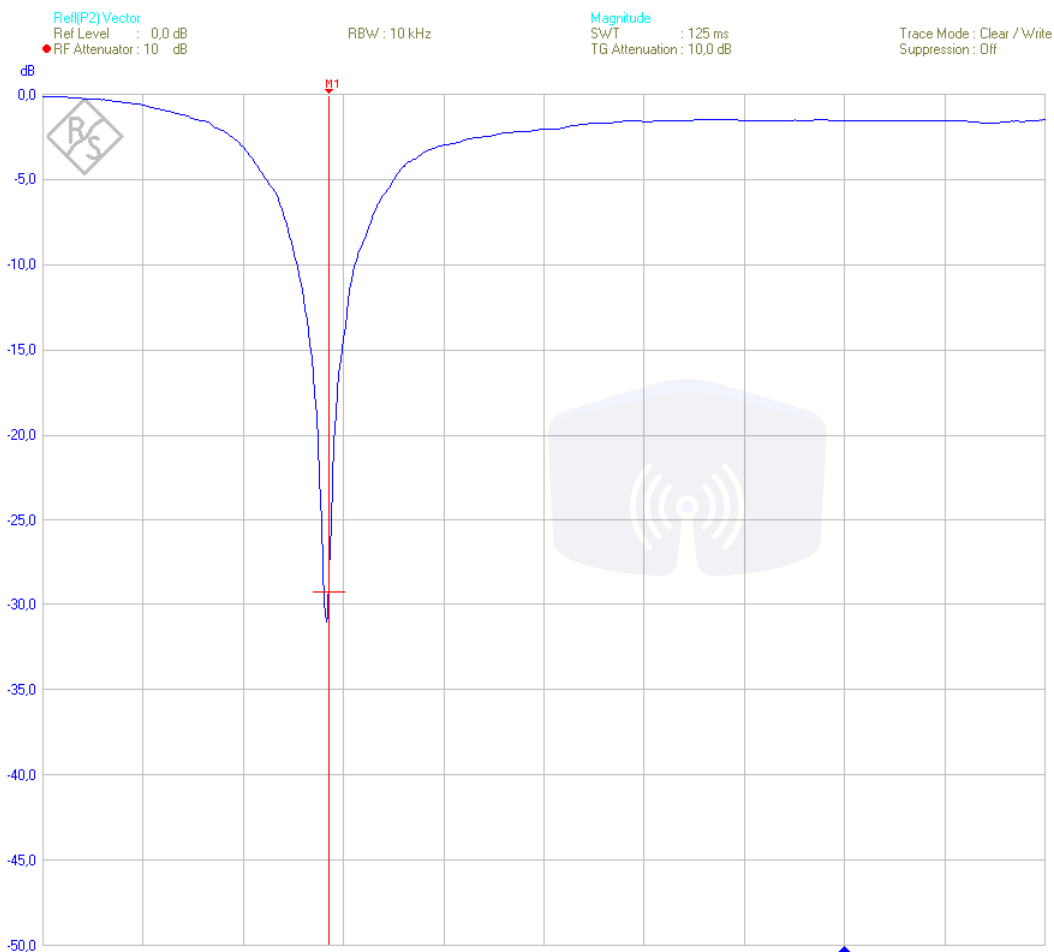


VSWR



Measurement Setup	
Name	Sweep (T1)
Date	17 / 8 / 2022
Time	13:56:45
Instrument	FSH8 - 106415/028
Firmware Version	V2.50
Instrument Mode	Network Analyzer
Meas Mode	Vector
Bridge Mode	S22
Format	VSWR
Calibration State	Cal
Aperture Steps	---
Uplink	---
Downlink	---
Channel	---
Center Frequency	700 MHz
Frequency Offset	0 Hz
Span	1 GHz
Ref Level	0,0 dB
Ref Offset	0,0 dB
Range	21
RF Attenuation	Manual
RF Attenuator	10 dB
Preamplifier	Off
RF Input	50 Ohm
TG Attenuation	10,0 dB
TG Power	-10,0 dBm
TG Offset	0,0 dB
RBW	10 kHz
SWT	125 ms
Trigger Mode	Free Run
Trigger Level	---
Trigger Delay	---
Trace Mode	Clear / Write
Trace Math	Off
Trace Detector	Sample
Limit Line 1	---
Limit Line 2	---
Measurement Results	
Result Limit Line 1	---
Result Limit Line 2	---
Average Count	---
Markers	
M1 :	485 MHz : 1,071

REFLECTION LOSS



Measurement Setup	
Name	: Sweep (T1)
Date	: 17 / 8 / 2022
Time	: 13:56:45
Instrument	: FSH8 - 106415/028
Firmware Version	: V2.50
Instrument Mode	: Network Analyzer
Meas Mode	: Vector
Bridge Mode	: S22
Format	: Magnitude
Calibration State	: Cal
Aperture Steps	: ---
Uplink	: ---
Downlink	: ---
Channel	: ---
Center Frequency	: 700 MHz
Frequency Offset	: 0 Hz
Span	: 1 GHz
Ref Level	: 0,0 dB
Ref Offset	: 0,0 dB
Range	: 50 dB
RF Attenuator	: Manual
RF Attenuator	: 10 dB
Preamplifier	: Off
RF Input	: 50 Ohm
TG Attenuation	: 10,0 dB
TG Power	: -10,0 dBm
TG Offset	: 0,0 dB
RBW	: 10 kHz
SWT	: 125 ms
Trigger Mode	: Free Run
Trigger Level	: ---
Trigger Delay	: ---
Trace Mode	: Clear / Write
Trace Math	: Off
Trace Detector	: Sample
Limit Line 1	: ---
Limit Line 2	: ---

Measurement Results	
Result Limit Line 1	: ---
Result Limit Line 2	: ---
Average Count	: ---

Markers	
M1:	485 MHz : -29,26 dB

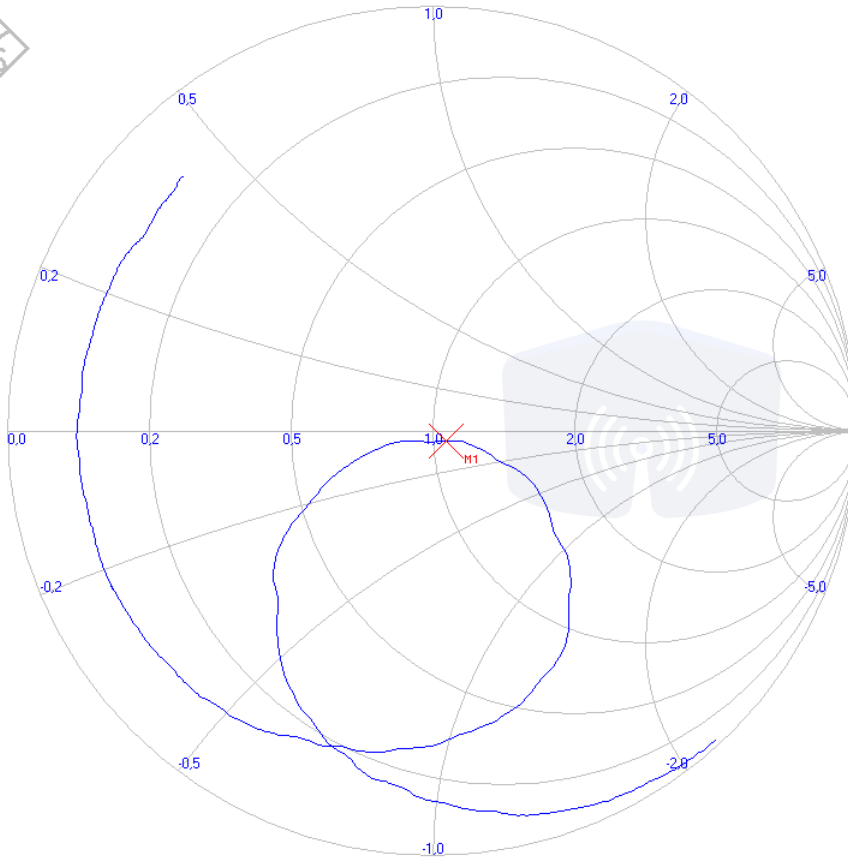
INPUT IMPEDANCE

Ref[P2] Vector
Ref Level : 0,0 dB
RF Attenuator : 10 dB

RBW : 10 kHz

Smith Chart
SWT : 125 ms
TG Attenuation : 10,0 dB

Trace Mode : Clear / Write
Suppression : Off



Measurement Setup	
Name	Sweep [11]
Date	17 / 8 / 2022
Time	13:56:45
Instrument	FSH8 - 106415/028
Firmware Version	V2.50
Instrument Mode	Network Analyzer
Meas Mode	Vector
Bridge Mode	S22
Format	Smith Chart
Calibration State	Cal
Aperture Steps	---
Uplink	---
Downlink	---
Channel	---
Center Frequency	700 MHz
Frequency Offset	0 Hz
Span	1 GHz
Ref Level	0,0 dB
Ref Offset	0,0 dB
Range	21
RF Attenuation	Manual
RF Attenuator	10 dB
Preamplifier	Off
RF Input	50 Ohm
TG Attenuation	10,0 dB
TG Power	-10,0 dBm
TG Offset	0,0 dB
RBW	10 kHz
SWT	125 ms
Trigger Mode	Free Run
Trigger Level	---
Trigger Delay	---
Trace Mode	Clear / Write
Trace Math	Off
Trace Detector	Sample
Limit Line 1	---
Limit Line 2	---

Measurement Results	
Result Limit Line 1	---
Result Limit Line 2	---
Average Count	---

Markers	
M1 :	485 MHz : 1,071 -j2,81 Ohm

Operator : ---

Start Frequency : 200 MHz
Center Frequency : 700 MHz

Stop Frequency : 1,2 GHz
Span : 1 GHz



Order Details

Order Link:

<http://www.kuvayitechnologies.com/>

Çağış Mah. Çağış B.M SK. NO: 340 /16-
İç Kapı No: 60-BİGADIÇ/ BALIKESİR

Sales: +90 505 116 27 05

e-mail: info@kuvayitechnologies.com

Web: <http://www.kuvayitechnologies.com/>