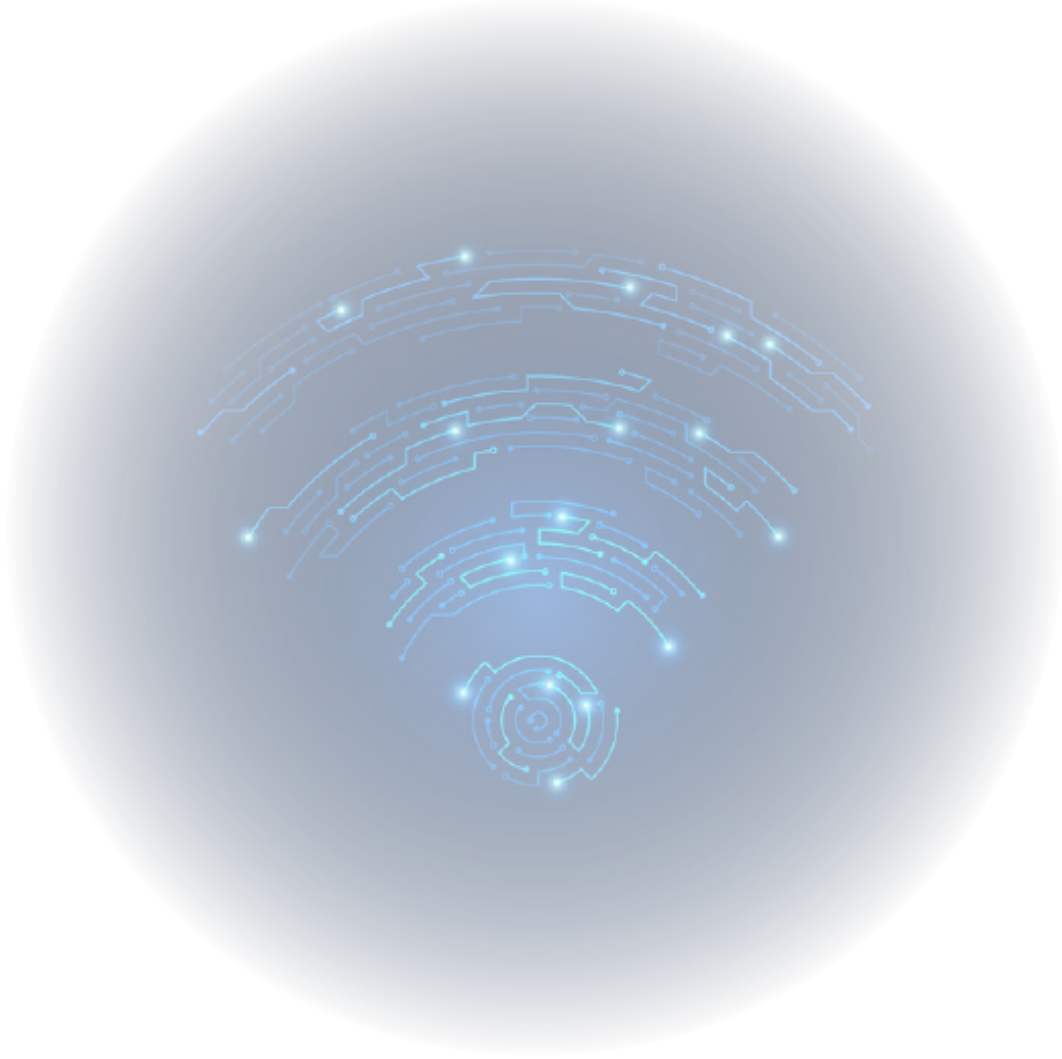


KVY-868M-DPL-B

ÇOK YÖNLÜ ANTEN (OMNI)





VERSİYON: 1.1


TARİH: 06.08.2022

KUVAYI TECHNOLOGIES A.Ş

## ÖZELLİKLER

ELEKTRİKSEL 	
Model	KVY-868M-DPL-B
Frekans	868 MHz
Patern Tipi	Çok Yönlü (Omni)
Polarizasyon	Dikey
Empedans	50 $\Omega$
Kazanç	2 dBi
VSWR	< 1.5:1
Band Genisligi	840-935 MHz
Maksimum Giriş Gücü	50W

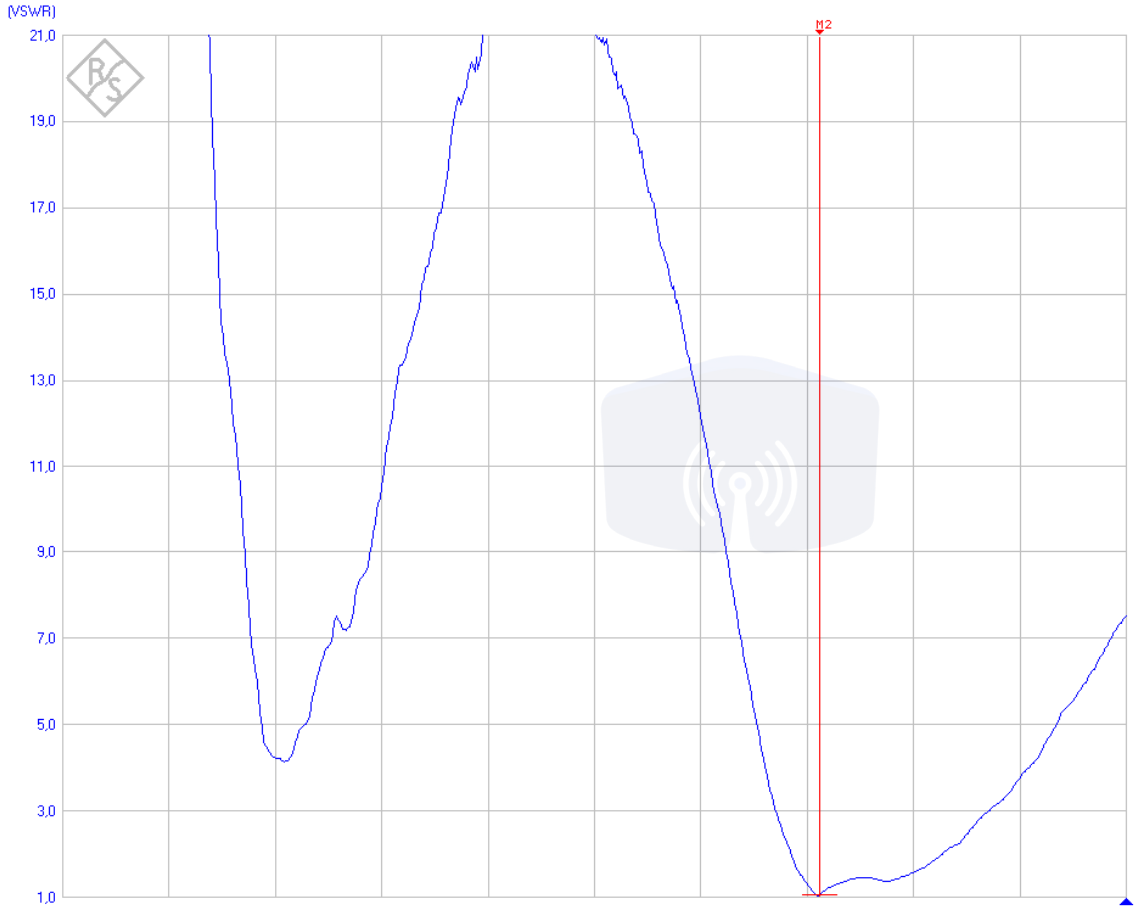
MEKANİK 	
Konnektör Tipi	SMA Plug (male) (0°,45°,90°)
Anten Rengi	Siyah
Uzunluk	200 mm
Çap	15 mm
Ağırlık	20 gr

ÇEVRE KOŞUL 	
Operasyonel Çalışma Sıcaklığı	-30° to +60°C
Depolama Sıcaklığı	-30° to +75°C
IP Koruma Sınıfı	



# VSWR

Ref(P2) Vector      RBW: 10 kHz      VSWR      Trace Mode: Clear / Write  
 Ref Level : 0.0 dB      SWT : 144 ms      TG Attenuation: 10.0 dB      Suppression: Off  
 RF Attenuator: 10 dB

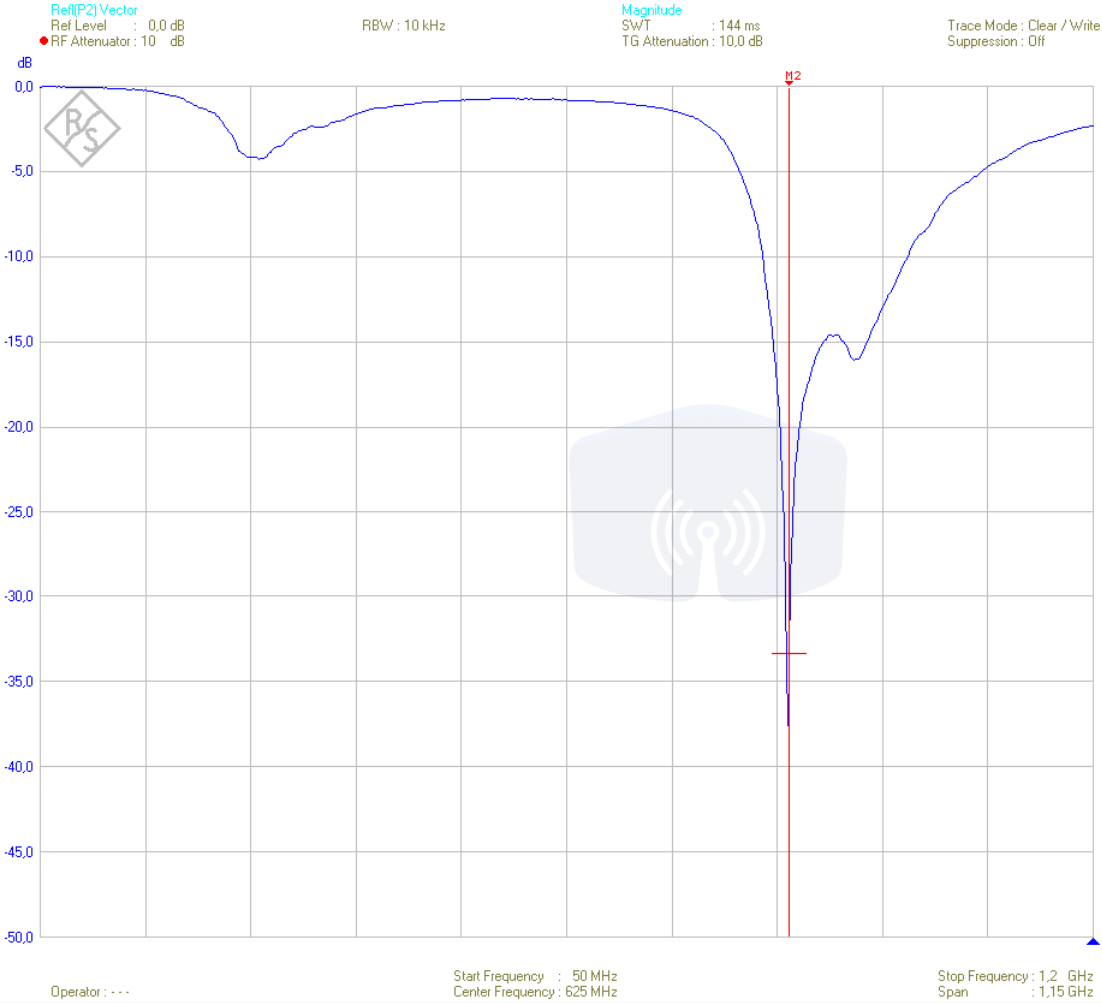


Measurement Setup	
Name	: Sweep (T1)
Date	: 8 / 8 / 2022
Time	: 9:14:08
Instrument	: FSH8 - 106415/028
Firmware Version	: V2.50
Instrument Mode	: Network Analyzer
Meas Mode	: Vector
Bridge Mode	: S22
Format	: VSWR
Calibration State	: Cal
Aperture Steps	: ...
Uplink	: ...
Downlink	: ...
Channel	: ...
Center Frequency	: 625 MHz
Frequency Offset	: 0 Hz
Span	: 1.15 GHz
Ref Level	: 0.0 dB
Ref Offset	: 0.0 dB
Range	: 21
RF Attenuation	: Manual
RF Attenuator	: 10 dB
Preamplifier	: Off
RF Input	: 50 Ohm
TG Attenuation	: 10.0 dB
TG Power	: -10.0 dBm
TG Offset	: 0.0 dB
RBW	: 10 kHz
SWT	: 144 ms
Trigger Mode	: Free Run
Trigger Level	: ...
Trigger Delay	: ...
Trace Mode	: Clear / Write
Trace Math	: Off
Trace Detector	: Sample
Limit Line 1	: ...
Limit Line 2	: ...

Measurement Results	
Result Limit Line 1	: ...
Result Limit Line 2	: ...
Average Count	: ...

Markers	
M2:	868 MHz : 1,044

# GERİ DÖNÜŞ KAYBI



Measurement Setup	
Name	: Sweep [T1]
Date	: 8 / 8 / 2022
Time	: 9:14:08
Instrument	: FSH9 - 106415/028
Firmware Version	: V2.50
Instrument Mode	: Network Analyzer
Meas Mode	: Vector
Bridge Mode	: S22
Format	: Magnitude
Calibration State	: Cal
Aperture Steps	: ...
Uplink	: ...
Downlink	: ...
Channel	: ...
Center Frequency	: 625 MHz
Frequency Offset	: 0 Hz
Span	: 1,15 GHz
Ref Level	: 0,0 dB
Ref Offset	: 0,0 dB
Range	: 50 dB
RF Attenuator	: Manual
RF Attenuator	: 10 dB
Preamplifier	: Off
RF Input	: 50 Ohm
TG Attenuation	: 10,0 dB
TG Power	: -10,0 dBm
TG Offset	: 0,0 dB
RBW	: 10 kHz
SWT	: 144 ms
Trigger Mode	: Free Run
Trigger Level	: ...
Trigger Delay	: ...
Trace Mode	: Clear / Write
Trace Math	: Off
Trace Detector	: Sample
Limit Line 1	: ...
Limit Line 2	: ...
Measurement Results	
Result Limit Line 1	: ...
Result Limit Line 2	: ...
Average Count	: ...
Markers	
M2:	868 MHz : -33,32 dB

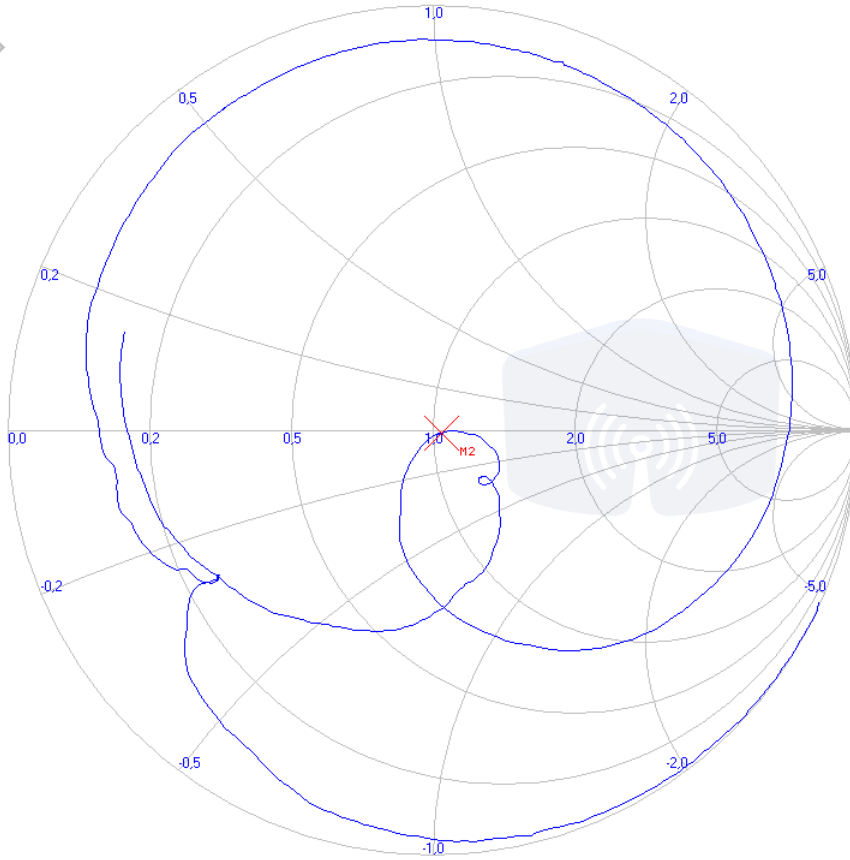
# GİRİŞ EMPEDANSI

Ref[P2] Vector  
Ref Level : 0,0 dB  
RF Attenuator : 10 dB

RBW : 10 kHz

Smith Chart  
SWT : 144 ms  
TG Attenuation : 10,0 dB

Trace Mode : Clear / Write  
Suppression : Off



Measurement Setup	
Name	Sweep [11]
Date	8 / 8 / 2022
Time	9:14:08
Instrument	FSH8 - 106415/028
Firmware Version	V2.50
Instrument Mode	Network Analyzer
Meas Mode	Vector
Bridge Mode	S22
Format	Smith Chart
Calibration State	Cal
Aperture Steps	---
Uplink	---
Downlink	---
Channel	---
Center Frequency	625 MHz
Frequency Offset	0 Hz
Span	1,15 GHz
Ref Level	0,0 dB
Ref Offset	0,0 dB
Range	21
RF Attenuation	Manual
RF Attenuator	10 dB
Preamplifier	Off
RF Input	50 Ohm
TG Attenuation	10,0 dB
TG Power	-10,0 dBm
TG Offset	0,0 dB
RBW	10 kHz
SWT	144 ms
Trigger Mode	Free Run
Trigger Level	---
Trigger Delay	---
Trace Mode	Clear / Write
Trace Math	Off
Trace Detector	Sample
Limit Line 1	---
Limit Line 2	---
Measurement Results	
Result Limit Line 1	---
Result Limit Line 2	---
Average Count	---
Markers	
M2:	868 MHz : 1,044 - j0,73 Ohm

Operator : ---

Start Frequency : 50 MHz  
Center Frequency : 625 MHz

Stop Frequency : 1,2 GHz  
Span : 1,15 GHz

## Siparis Ayrıntıları

Siparis Linki:

<http://www.kuvayitechnologies.com/>

Çağış Mah. Çağış B.M SK. NO: 340 /16-  
İç Kapı No: 60-BİGADİÇ/ BALIKESİR

Satış: +90 505 116 27 05

e-mail: [info@kuvayitechnologies.com](mailto:info@kuvayitechnologies.com)

Web: <http://www.kuvayitechnologies.com/>